

Steel Oil Tank

Rectangular

Description	A	B	C	Type
12 Litre	335	270	290	12C
16 Litre	410	325	305	16C
30 Litre	470	375	335	30C
55 Litre	600	470	365	55C

Powerpacks are fitted to the lid of these tanks. For details on the position and orientation please contact our sales team.

These tanks are finished in zinc rich primer as standard.

18 Litre Steel 18S

HPM

TD4

H

S

C

N

05P

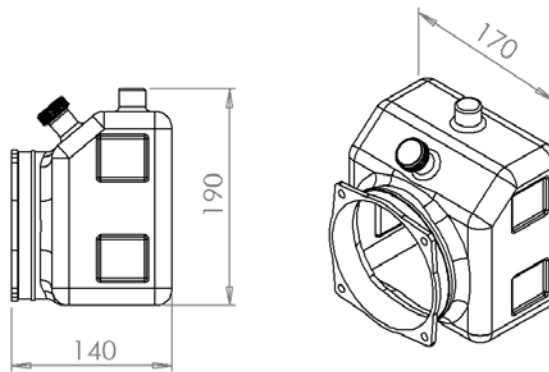
C

4567

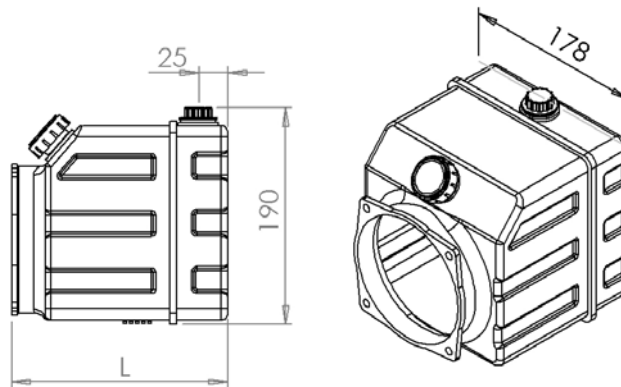
Plastic Oil Tank

Rectangular

Description	Length	Type
1.5 Litre Plastic		01P



3 Litre Plastic	190	03P
5 Litre Plastic	285	05P
8 Litre Plastic	432	08P



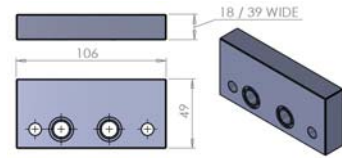
Accessories

Stacking Plates

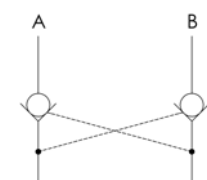
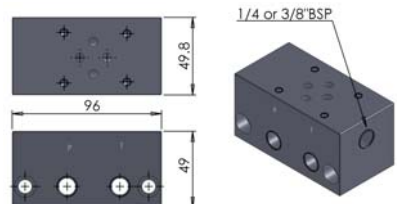
For any additional valve stacking plates, use "C" in part code

Cetop03 (NG6) Directional Control Valve Plates

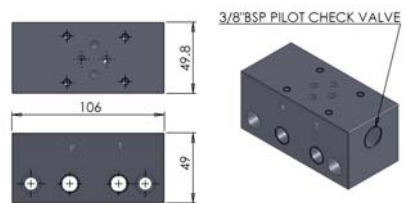
Description	Part Number
Spacer plate 18mm	HP050040-1
Spacer plate 39mm	HP050040-2



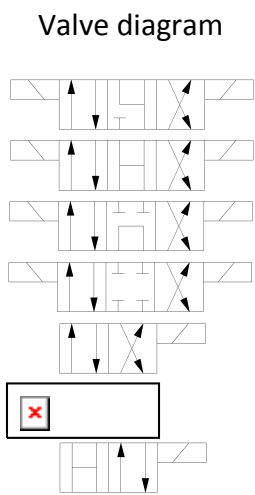
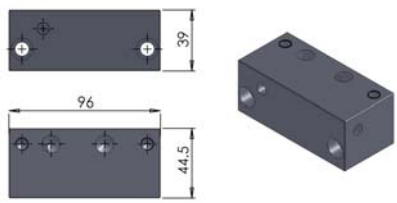
Parallel connection Cetop03 with 1/4" BSP ports	HP050015
Parallel connection Cetop03 with 3/8" BSP ports	HP050016
Series connection Cetop03 with 1/4" BSP ports	HP050128



Pilot Check Valve on A&B with 3/8" BSP ports	HP150014-AB
Pilot Check Valve on A only with 3/8" BSP ports	HP150014-A
Pilot Check Valve on B only with 3/8" BSP ports	HP150014-B

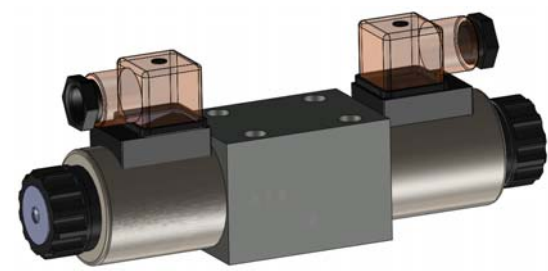


Vertical to Horizontal Conversion block	HP050129
---	----------



Code
4WE6J60
4WE6H60
4WE6G60
4WE6E60
4WE6C60
4WE6Y60
4WEHB60

C3 Valves



Voltages available 12VDC, 24VDC, 24VAC, 110VAC, 220VAC
Push and Twist Manual Overrides also available

Working pressure (Max)	Flow (Max)
315bar	40l/min

HPM
TD4
33W
H
S
C
N
OSP
C
4567

Stacking Plates

For any additional valve stacking plates, use "C" in part code

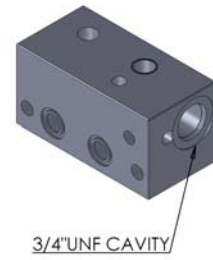
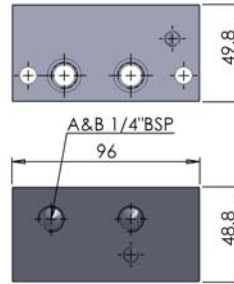
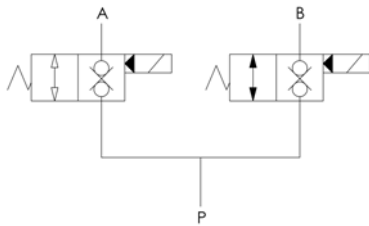
Plates with Solenoid Directional Control Valve Cartridges

Description

Part Number

Manifold for dual—Single Acting circuits

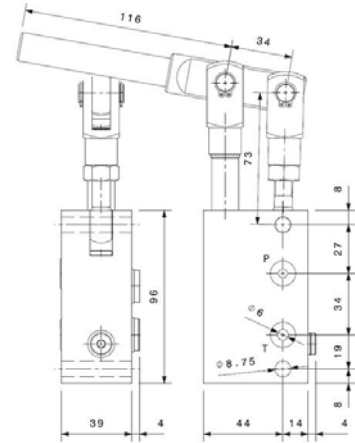
HP150126



3/4"UNF CAVITY

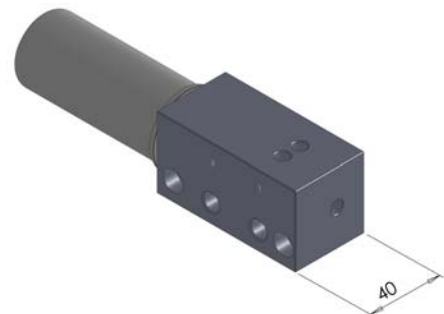
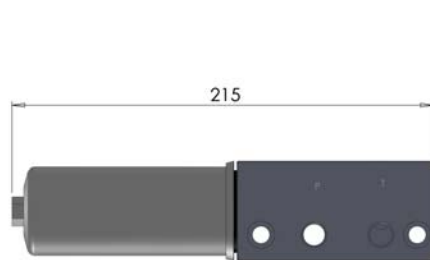
Hand Pump 8cc

BMO07200



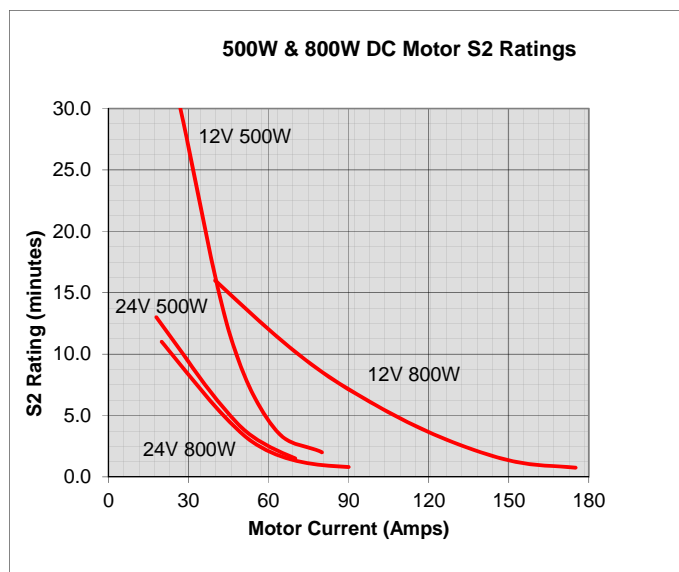
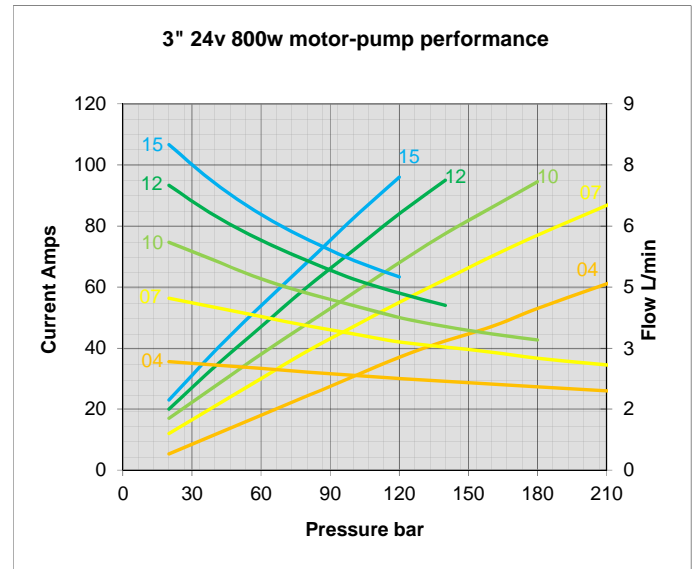
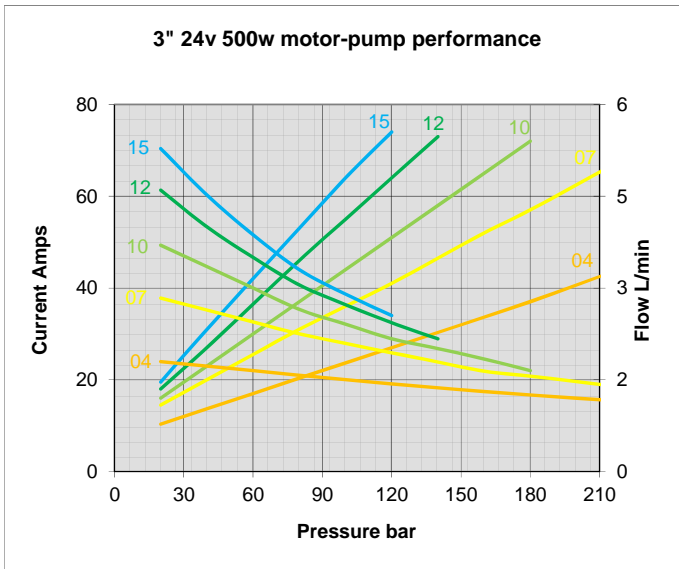
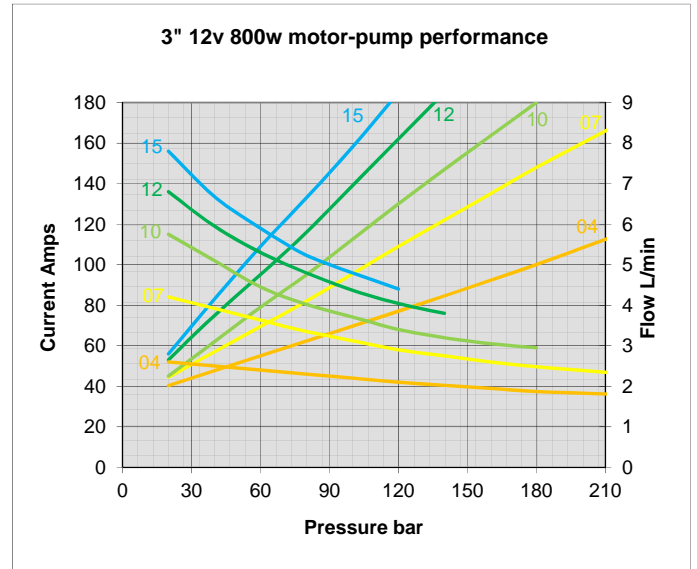
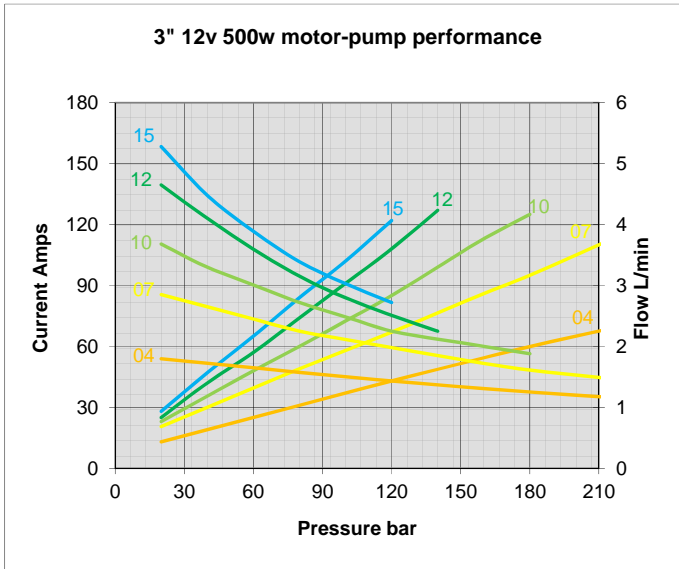
Return Filter - 15 lpm max

HPV5281



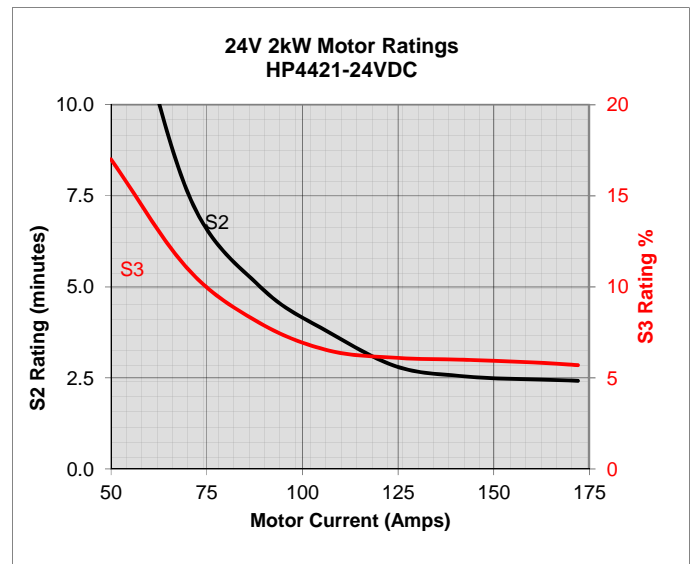
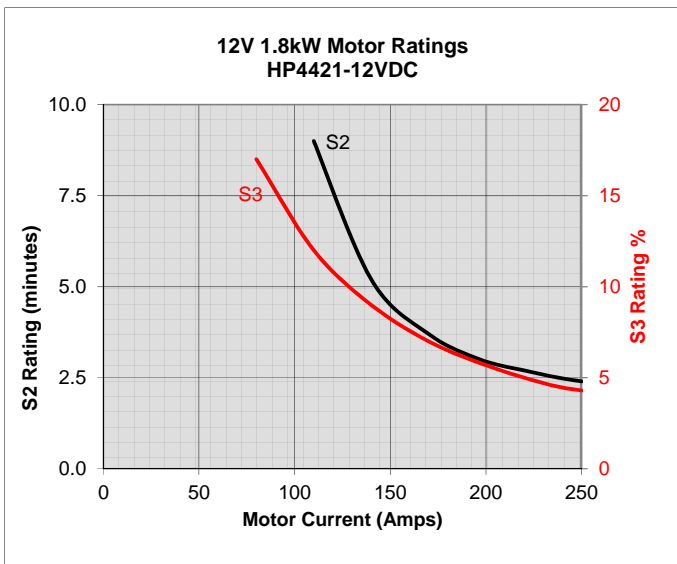
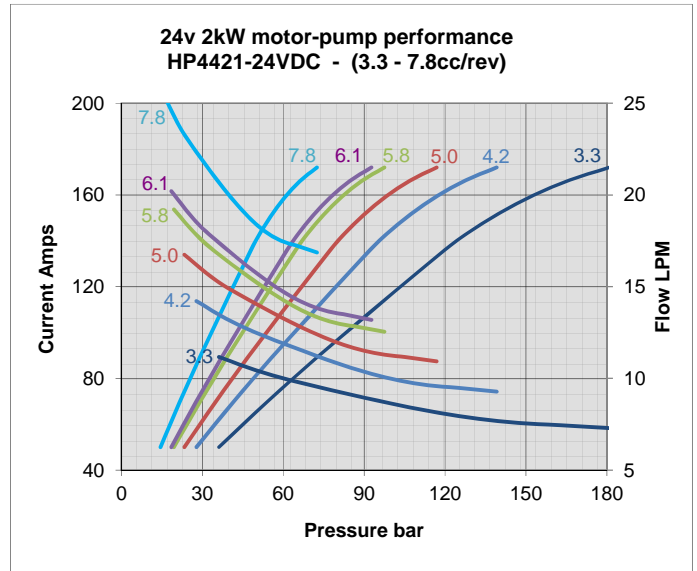
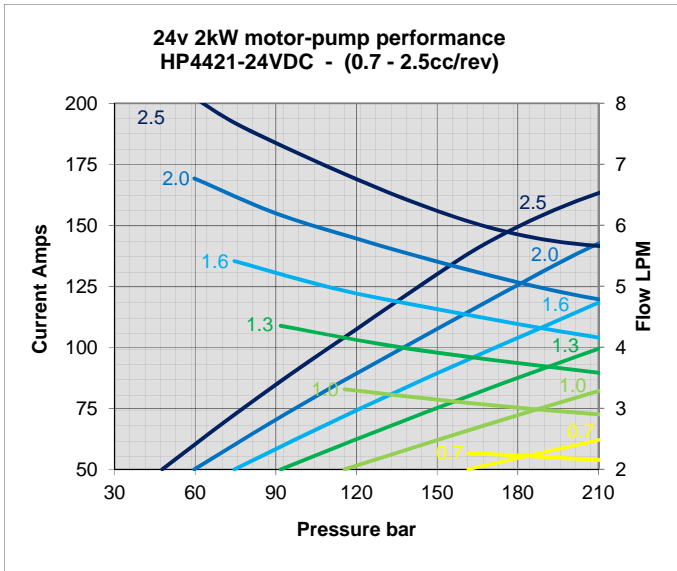
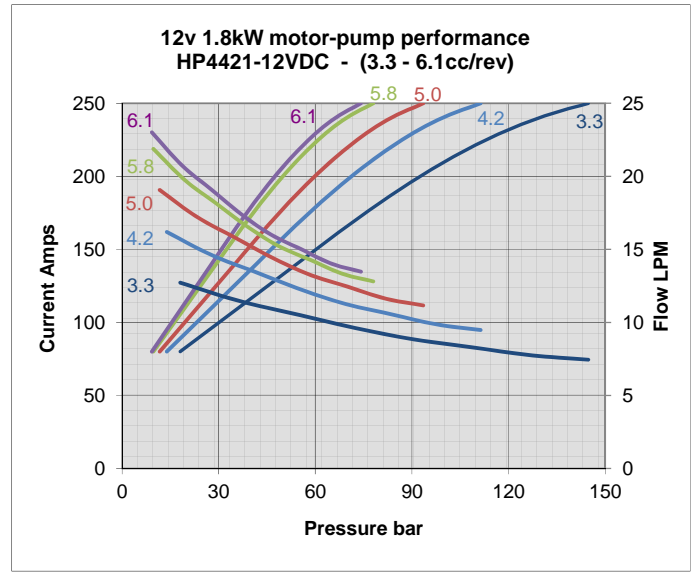
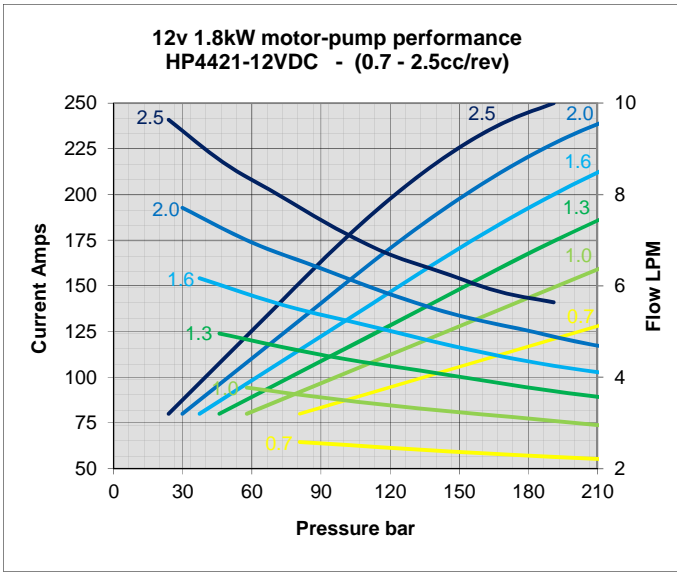
HPM
TD4
33W
H
S
C
N
05P
C
4567

Nominal motor-pump performance at constant voltage and at nominal 20-25° C with ISO 3448/VG22



HPM
TD4
33W
H
S
C
N
OSP
C
4567

Nominal motor-pump performance at constant voltage and at nominal 20-25° C with ISO 3448/VG22



HPM

TD4

33W

H

S

C

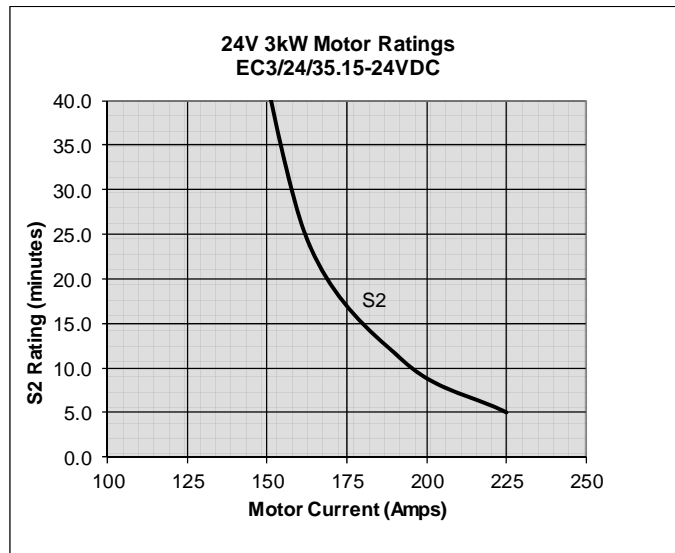
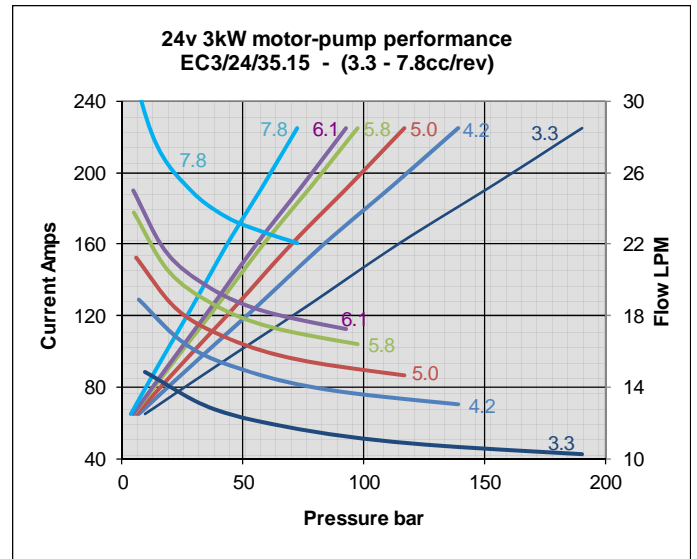
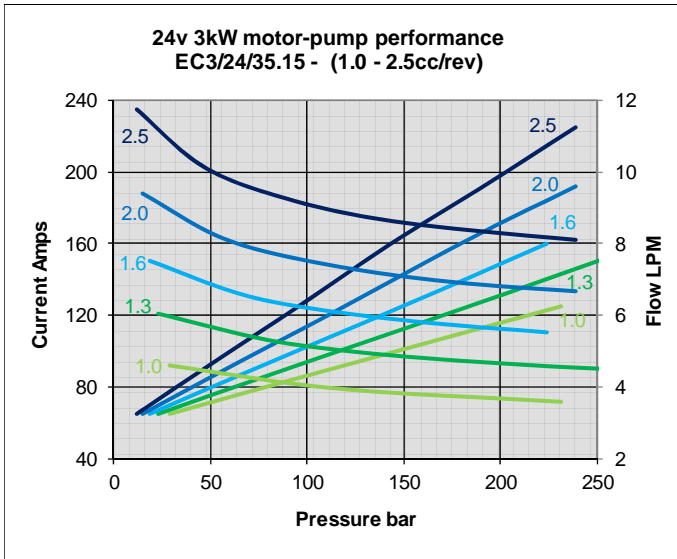
N

05P

C

4567

Nominal motor-pump performance at constant voltage and at nominal 20-25° C with ISO 3448/VG22



HPM
TD4
33W
H
S
C
N
OSP
C
4567